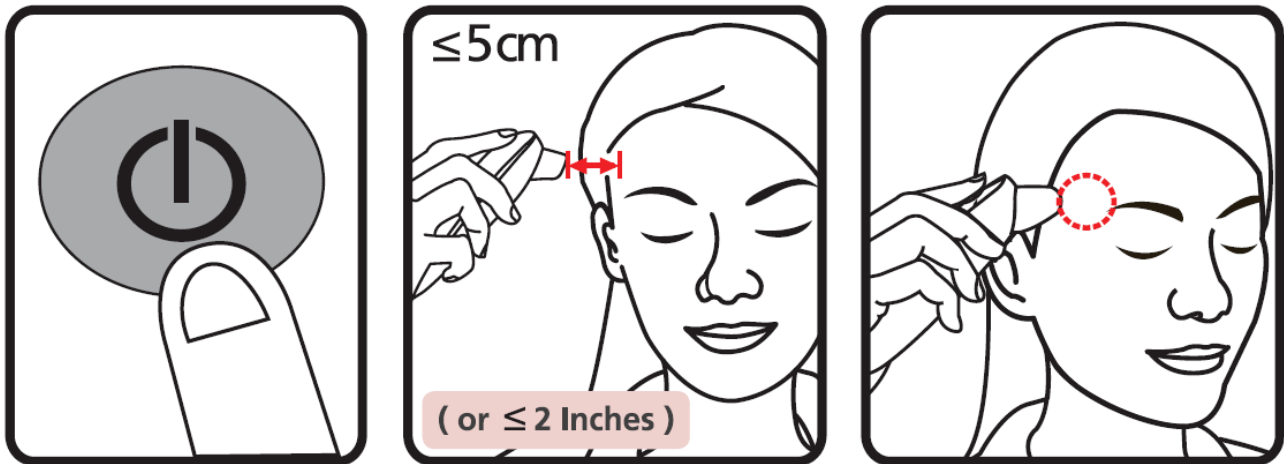


Rossmax Temple Thermometer HA500

Quick Guide

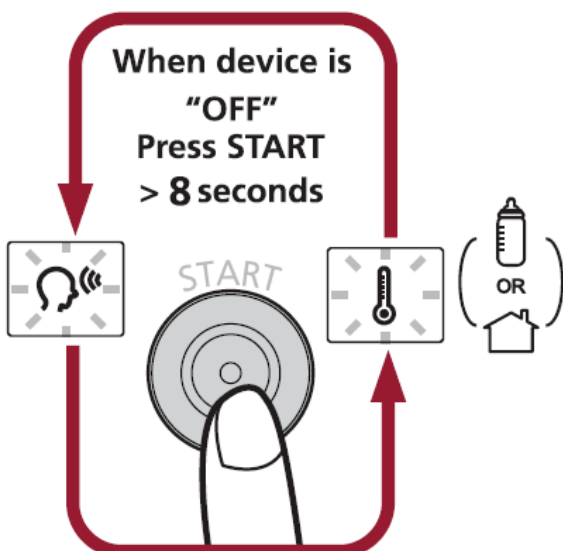


How to measure temple temperature

1. Always make sure the probe is clean, and without damage.
2. Press “ON/OFF/Memory” button to power on the device.
3. Vertically aim the thermometer at the temple with a distance of less than 5 cm. If the temple is covered with hair, sweat or dirt, remove the obstacle from the temple to improve the measuring accuracy.
4. Press the “Start” button to take temperature. Measurement is complete when you hear a long beep sound.
5. Read the recorded temperature from the LCD display.
6. Clean the probe after each use to ensure an accurate reading and avoid cross contamination. (See the section of Care and Cleaning for details.)
7. Remember to put in the storage case when not in use.

Remarks: Please consult your doctor for the interpretation of results and diagnosis.

Switching between Body Mode and Object Mode



For switch mode,

1. Turn “OFF” the device
2. Hold “START” button for more than 8 seconds



Caution

1. Only use the device once you have read and understood these instructions for use. Keep the instruction manual for use.
2. The thermometer and patient needs to stay in the room in which the measurement is taken for at least 30 minutes before use.
3. It is recommend that you always take the temperature in the same location, since temperature readings may vary according to the locations.
4. It is recommended that three temperatures are taken and the highest one taken as the reading if:
 - a. New born infants
 - b. Children with a compromised immune system and for whom the presence or absence of fever is critical.
 - c. When the user is learning how to use the thermometer for the first time until he/she has familiarized himself/herself with the instrument and obtains consistent readings.
 - d. The reading is extremely low.
5. Do not take a measurement while drinking, eating, sweating or exercising.
6. When take the device from storage at below or above 16~40°C (60.8~104°F), place it in 16~40°C (60.8~104°F) temperature range for at least 30 minutes before use.
7. Remove the battery if the device will not be used for a long time.

Remarks: Please consult your doctor for the interpretation of results and diagnosis.

