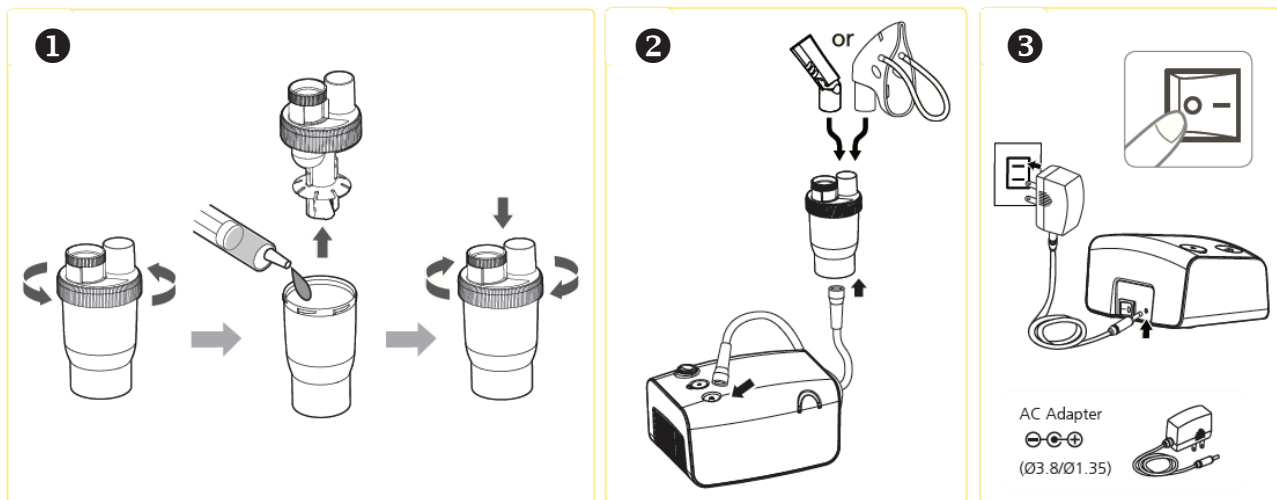


Rossmax Nebulizer NB80

Quick Guide



How to use nebulizer NB80

1. Assembling your nebulizer kit

Follow the cleaning instructions in this guidebook under “Cleaning technique” prior to using your nebulizer for the first time or after it has been stored for an extended period of time.

REMEMBER: Always unplug the compressor and make sure the power-switch is turned to the “OFF” position before cleaning, assembling and before or after each use.

1. Place the compressor on a flat, stable surface within reach.
2. Gently twist and pull straight up on the lid of the nebulizer to separate into two parts (medication cup and cover).
3. Make sure that the nozzle is properly installed inside the medication cup. The stem inside the medication cup inserts into the tube of the nozzle.
4. Add the prescribed amount of medication to the medication cup.
5. Reassemble the nebulizer by carefully twisting the medication cup and cover together. Make sure that the two parts fit securely.

2. Operating your nebulizer

The nebulizer is operable at up to a 45° angle. If the angle is greater than 45°, no aerosol will be generated.

1. Attach one end of the air tube connector to the air output.
2. Carefully attach the opposite end of the air tubing connector to the stem at the base of the nebulizer kit.
3. Attach the angled mouthpiece or mask to the top of the nebulizer.
4. The capacity of the medication cup is 2~5 ml.

NOTE: A 30-minute interval is recommended after each use.

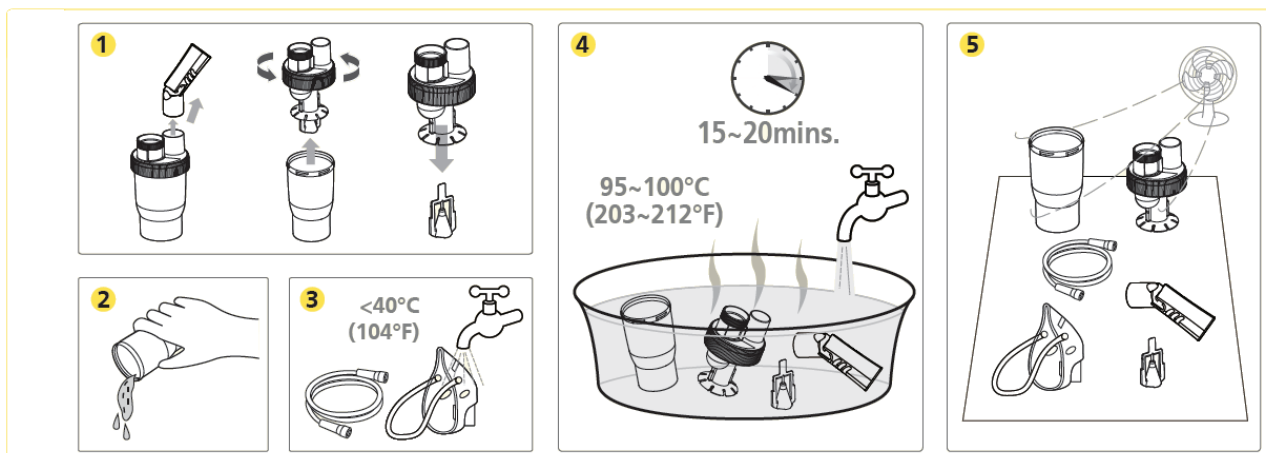
3. Steps of keeping your nebulizer

After every use:

1. Unplug the unit from the power source.
2. Allow the unit to completely cool.
3. Carefully detach the air tubing from the nebulizer and pour out any remaining medication.
4. Follow the cleaning procedures provided in this guidebook.



Cleaning Procedure



Rinsing technique (performed after each treatment or before first use).

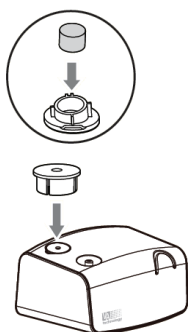
1. Make sure that the power-switch has been turned to the “OFF” position and the unit has been disconnected from the power source.
2. Disconnect the air tube from the nebulizer device.
3. Gently twist and pull up the cover of the nebulizer kit to open and separate.
4. Rinse the nebulizer kit and components with hot tap water.
5. Dry with clean towels or completely air dry.
6. Reassemble the nebulizer kit.

NOTE: For the first time cleaning or after the unit has been stored for an extended period of time, thoroughly clean all components, including the air tube. The nebulizer kit is dish-washer safe.

Cleaning the compressor

Wipe the compressor daily using a soft cloth.

NOTE: Any other form of cleaning or cleaning agents may damage the finish of the unit.



Changing the air filter

It is important to change the air filter approximately when the air filter turns gray. It is recommended to change air filter every 2 months.

1. Remove the air filter cover by gently pulling forward.
2. Discard the gray filter.
3. Replace with a new, clean air filter.
4. Securely re-attach the air filter cover to the unit.

NOTE: Air filters cannot be cleaned or washed. Only NB80 air filters can be used. Do not substitute alternate material such as cotton. Do not operate without an air filter.

