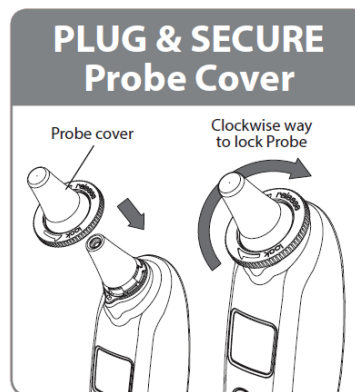
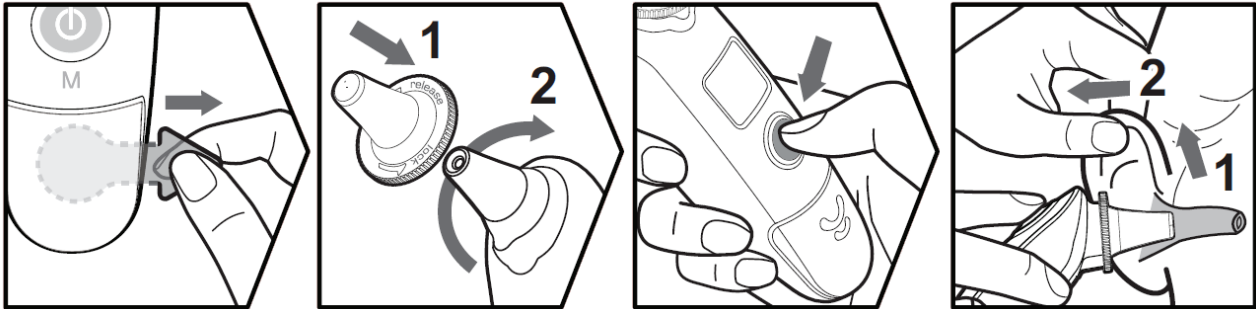



Rossmax Thermometer RA600

Quick Guide

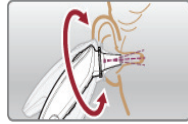


How to use the RA600 Infrared Ear Thermometer

1. To achieve accurate readings, make sure a new, clean probe cover is in place before each measurement and the ear canal is clean.
 - a. Install the probe cover by clockwise rotating then fix it.
 - b. Remove the probe cover by anti-clockwise rotating then releasing it.
2. Press the “On/Off/Memory” button. The thermometer is ready for use after the ear icon is flashing and two beeps are sounded.
3. Gently pull the ear back to straighten the ear canal and snugly position the probe into the ear canal, aiming towards the membrane of the eardrum to obtain an accurate reading.
 - a. Before measurement, correct installation of the probe cover ensures accurate measurement.
 - b. Replace the probe cover after each use to ensure an accurate reading and avoid cross contamination.
 - c. This thermometer must only be used with Rossmax probe covers, other covers can lead to inaccuracy. If running out of probe covers, please contact with the original seller or distributor for buying new probe covers.
4. Measuring the ear temperature: Use the index finger to trigger. Press “Start” button, a long beep will be sounded when measurement is done.
5. Power Off: Device will automatically shut off if left idle for more than 1 minute to extend battery life. Or press  “On/Off/Memory” button for at least 3 seconds to turn the device off.
6. **Fever alarm:** the measuring temperature is higher than 37.5°C (99.5°F), the display will flashing and 4 short beeps will be sounded. The measuring temperature is higher than 42.2°C (108.0°F), the display will show “Hi” and 4 short beep will be sounded.
 - a. It is recommended that you measure 3 times with the same ear. If the 3 measurements are different, select the highest temperature.
 - b. To avoid the risk of cross contamination, please clean the probe according to “Clean and Storage” section after each use.



Scanning Mode



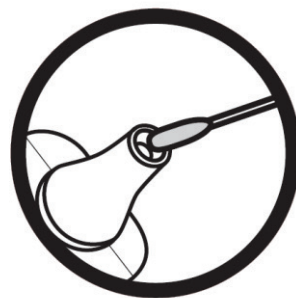
If you continuously obtain different measurement results, it is recommended that you use Scanning Mode to measure.

Measuring the ear temperature: Use the index finger to trigger, press and hold the “Start” button for 3 seconds to take measurement. During the measuring process, gently pivoting the probe side-to-side to view the entire ear canal or in order to find the highest temperature. Release the “Start” button until hearing a long beep sound and the measurement is completed.

Cautions

1. Besides the oral temperature, the body temperature measured by ear may be different from measurements taken by rectal or axillary. Therefore, there is no any meaning to compare them. Take the temperature periodically to find out the normal ear temperature reading, then use that reading as the basis for comparison with any measurement taken when you suspect a fever.
2. Keep the unit dry and away from where it might be exposed to moisture, liquids, direct sunlight, high temperature, high humidity, or excessive dust.
3. This device is not shock-protected. Do not drop, heavily pressure the unit or fall from high place.
4. Wipe the device clean before storing.
5. When taking the device from storage below or above 10~ 40°C (50~104°F), place it in 10~ 40°C (50~104°F) temperature range for at least 30 minutes before use.
6. Be sure to consult a doctor if you feel that your health is in poor condition.

Cleaning and storage



The probe is the most delicate part of the thermometer. Use with care when cleaning the lens to avoid damage.

1. Please use the cotton swab with the Alcohol to clean the lens (on the inside of the probe).
2. Allow the probe to fully dry for at least 5 minutes.
 - a. Please check the device if it falls and damages. If you can't make sure of it, please send the complete device to the nearest retailer for checking.
 - b. Keep the unit dry and away from any liquid and direct sunlight. The probe should not be submerging into liquids.

